



The Kemi

Scandinavian Elegance in a Compact Tiny Home

Discover the elegance of Scandinavian design in a compact, versatile living space. The Kemi Tiny Home embodies simplicity, functionality, and warmth, all wrapped in a modern aesthetic that feels right at home in any environment. Whether you're looking for a full-time residence, a vacation retreat, or an additional living space, Kemi offers the perfect blend of style and substance.

Details

Length	20'
Width	8' 5"
Height	13' 5"
Area	160 sq.ft
Weight	8,500 lbs
1st Floor Bedroom	1
Laundry	Yes (Combination)
Kitchen	Two Burners
Lofts	1
Bathroom	1
Loft Size	94" x 77"
Floor-to-loft height	85"
Loft Headroom	37 1/4"
Recommended Towing Vehicle	F250 or Similar



Interior

The main floor of Kemi is both spacious and functional, offering plenty of room to move around comfortably. It features a cozy queen-size bed and a huge picture window by the bed and the front that floods the space with natural light. The warm yellow tones of southern yellow pine cover the interior, creating a welcoming atmosphere, while black LED sconces provide a sleek accent to complete the look.



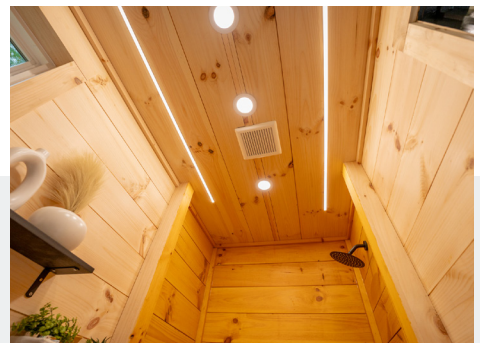
Kitchen

Kemi's kitchen boasts sleek black granite countertops and matching black cabinets that add a touch of modern style. The LED lights neatly tucked beneath the base cabinets provide a chic, contemporary glow. It's a great setup for everyday cooking, and if you're planning to stay longer, there's room to add a laundry unit. Plus, the upper cabinets offer extra storage to keep everything organized and within easy reach.



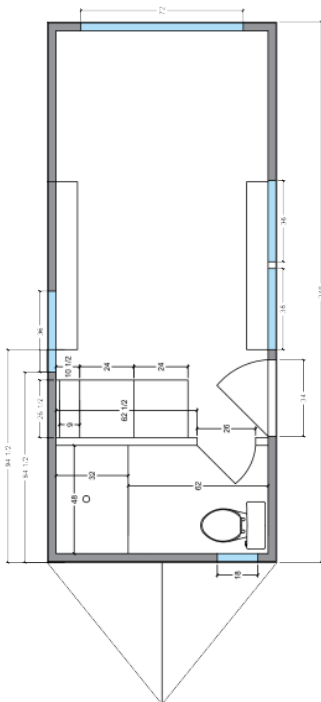
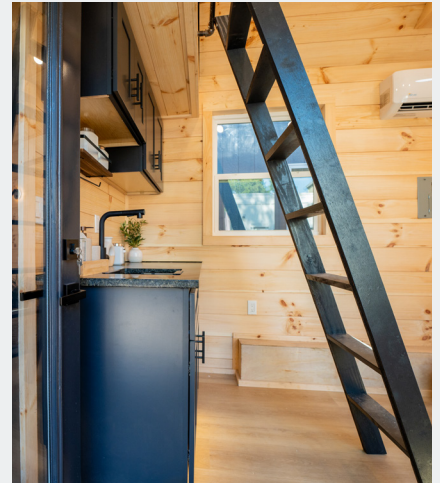
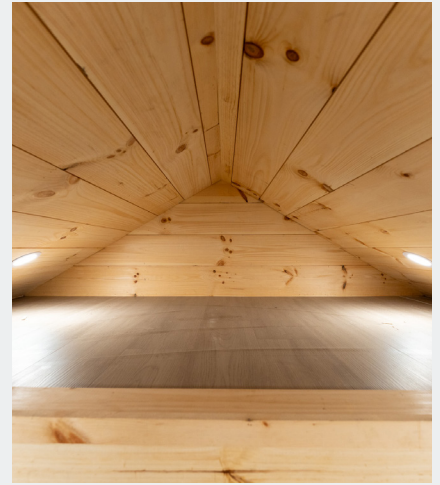
Bathroom

The spacious shower, measuring 48 inches, is larger than previous models and ideal for Airbnb guests. It includes a standard flush toilet, a large shower with black walls and shower pan, and a compact wall-mounted sink.

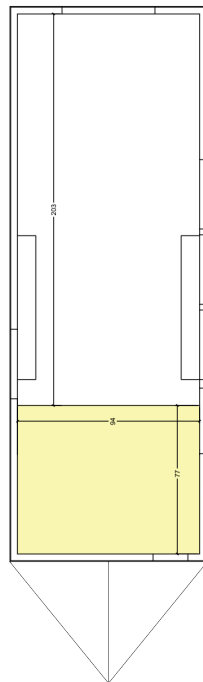


Loft

Kemi's loft, measuring approximately 93.6 by 76.8 inches, provides a versatile area that can comfortably fit a bed or be customized for extra storage space, accessible by a ladder, offering flexibility to suit your lifestyle needs.



LOFT FLOOR PLAN



Floorplan

Kemi's 160-square-foot layout is designed for comfort, featuring a cozy living area with a queen-size bed beneath large windows that fill the space with natural light. The loft, measuring 93.6 by 76.8 inches, offers extra room for a bed, making Kemi perfect for both short and long stays. Compact and stylish, every inch is thoughtfully utilized.

Dragon Tiny Homes has proudly been a NOAH Certified builder for 3 years and counting.

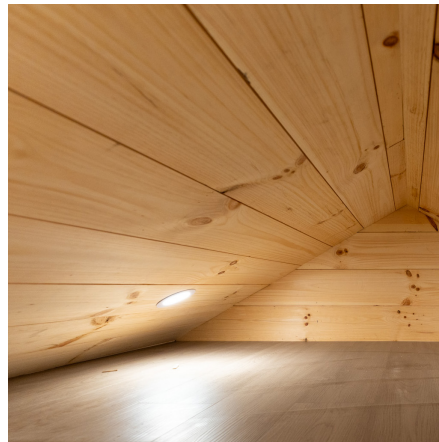


Dragon Tiny Homes is proud to have been NOAH Certified for three years in a row! This certification means our homes meet the highest standards for safety, quality, and compliance with national building codes. Every tiny home undergoes thorough inspections, covering everything from structural integrity and electrical systems to plumbing and overall safety. NOAH's strict certification process ensures that each home is built to last and meets the most up-to-date regulations for tiny home construction.



So cute!!
I love this!!

-kbmedia21



Scandinavian
Elegance



Built
to Last

