



Element 20'

The Affordable Compact Haven

The Element 20 by Dragon Tiny Homes is designed for those who seek affordability without compromising on quality or customization. With a focus on simplicity and functionality, this tiny home offers a blank canvas for you to create your ideal living space, tailored to your unique style and needs. Whether you're looking for a cozy retreat, an Airbnb rental, or a minimalist lifestyle, the Element 20 provides a flexible and budget-friendly solution.

Details

Length	20'
Width	8' 5"
Height	13' 6"
Area	135 sq.ft + lofts
Weight	8,000 lbs
1st Floor Bedroom	0
Laundry	No
Kitchen	Two Burners
Lofts	1
Bathroom	1
Loft Size	115" x 94 1/8"
Floor-to-loft height	84"
Loft Headroom	29 1/2"
Recommended Towing Vehicle	F350 or Similar



Interior

Inside you'll find a thoughtfully designed space that emphasizes openness and functionality. The expansive floor plan allows for a seamless flow between the living, dining, and sleeping areas, making the most of the compact 160-square-foot layout. Large windows flood the interior with natural light, creating a bright and airy atmosphere that's both comfortable and welcoming.



Kitchen

The kitchen is designed for efficiency and convenience, featuring a larger layout that accommodates optional built-in cooktops. With ample counter space and modern cabinetry, this kitchen is perfect for those who enjoy cooking at home or hosting guests. The clean, minimalist design ensures that everything you need is within easy reach, making meal prep a breeze.



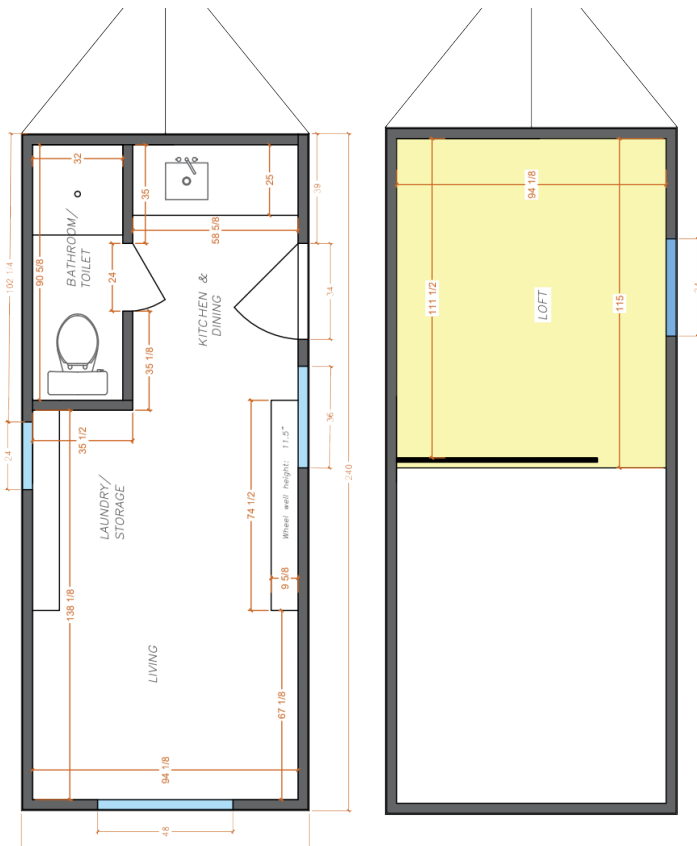
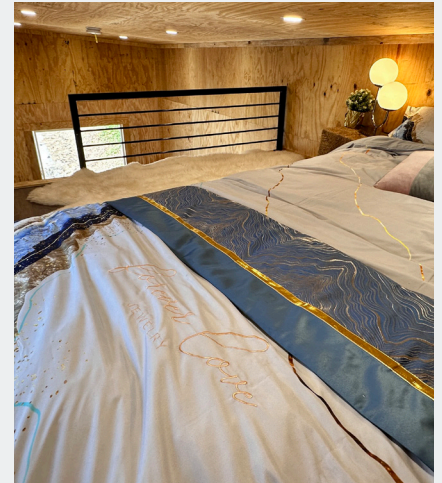
Bathroom

The bathroom features a roomy 32-inch shower, it offers a comfortable space for daily routines. The standard flush toilet is complemented by an upgrade option to a compost toilet, catering to eco-conscious homeowners. Subtle design elements, including refined fixtures, contribute to a bathroom that's as functional as it is stylish, ensuring that even the smallest details enhance your living experience.



Loft

The versatile loft can be a cozy sleeping area that can accommodate a queen-sized bed. Measuring 93.6 by 78 inches, it provides ample space for rest and relaxation, with an egress window that ensures safety and ventilation. Accessed by either a ladder or optional stairs, the loft adds an extra layer of functionality to this compact home, making it ideal for both short and long-term stays.



Floorplan

The open floor plan creates a spacious feel, while the loft adds valuable additional living space. Technical features like the custom-engineered steel frame, energy-efficient insulation, and optional compost toilet upgrade demonstrate a commitment to sustainability and modern living. Whether you prefer a minimalist setup or a more customized interior, the Element 20 is designed to adapt to your lifestyle and preferences.

Dragon Tiny Homes has proudly been a NOAH Certified builder for 3 years and counting.



Dragon Tiny Homes is proud to have been NOAH Certified for three years in a row! This certification means our homes meet the highest standards for safety, quality, and compliance with national building codes. Every tiny home undergoes thorough inspections, covering everything from structural integrity and electrical systems to plumbing and overall safety. NOAH's strict certification process ensures that each home is built to last and meets the most up-to-date regulations for tiny home construction.



very
affordable

-Tonika Little



Adaptable
Affordable



Built
to Last

