



Element 16'

The Versatile Canvas

Introducing the Element tiny home: an affordable solution for those seeking stylish and functional tiny living. Measuring 16 feet long and 8.5 feet wide, this compact yet versatile home offers a total of 135 square feet of ground floor space, complemented by a spacious loft. The Element home balances cost-efficiency with customizable options, making it perfect for those looking to personalize their living space while keeping budgets in check.

Details

Length	16'
Width	8' 5"
Height	13' 6"
Area	135 sq.ft + lofts
Weight	8,000 lbs
1st Floor Bedroom	0
Laundry	No
Kitchen	Two Burners
Lofts	1
Bathroom	1
Loft Size	114 3/4" x 94"
Floor-to-loft height	84"
Loft Headroom	38"
Recommended Towing Vehicle	F250 or Similar



Interior

Inside you'll find a thoughtfully designed layout that optimizes every square foot. The open floor plan includes a cozy loft area, ample counter space in the kitchen, and various storage solutions throughout. High-quality insulation ensures comfort year-round, and large windows invite natural light into the space, creating a warm and welcoming atmosphere. The interior design focuses on maximizing utility while providing a stylish and comfortable living environment.



Kitchen

The kitchen is compact yet highly functional. It boasts ample counter space and storage options to accommodate all your culinary needs. The efficient design includes a stainless steel sink and provisions for a two-burner cooktop, allowing for easy meal preparation. This well-planned kitchen makes the most of the available space, ensuring that you have everything you need within easy reach.



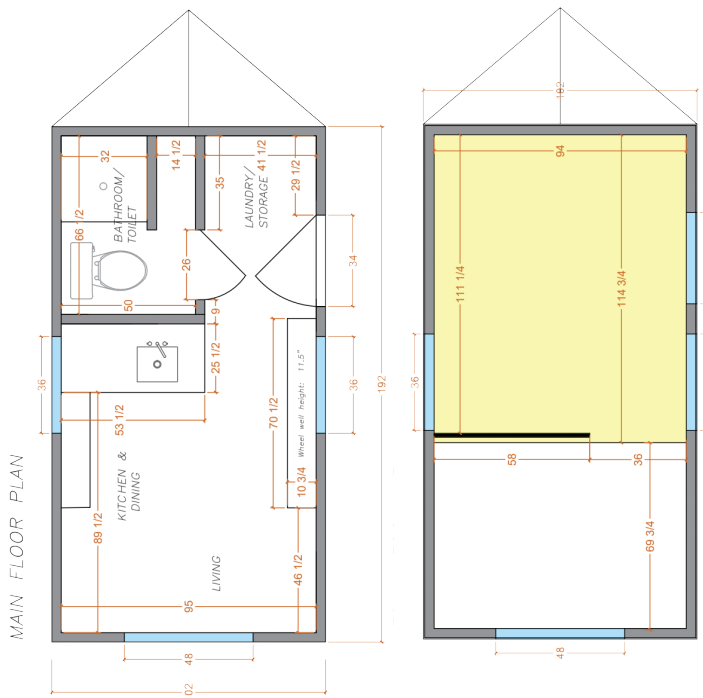
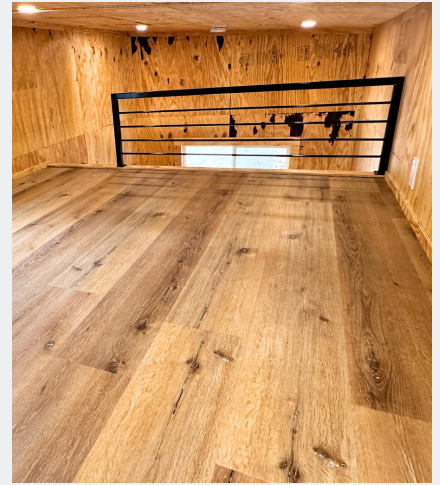
Bathroom

Featuring a 36-inch shower, a standard flush toilet, and a small sink, the bathroom is designed for both function and comfort. The efficient layout can also accommodate an optional laundry area, providing additional convenience. With its practical design, the bathroom maximizes utility while maintaining a cozy, welcoming environment.



Loft

The loft area is a cozy retreat, measuring approximately 115.2 inches by 94.8 inches. Designed to maximize vertical space, it provides a comfortable sleeping area with ample headroom. The loft is accessible via a well-placed ladder or staircase, depending on your preference, and features large windows to ensure it feels open and well-ventilated, avoiding any cramped feeling.



Floorplan

The Element tiny home's floor plan is meticulously crafted to balance compact living with functional design. The layout includes a spacious ground floor and a versatile loft area, maximizing usable space without compromising comfort. With a focus on efficiency, the design incorporates various storage solutions and an open floor plan that facilitates easy movement and use of space. The architectural design emphasizes simplicity and practicality, ensuring that every aspect of the home is both functional and aesthetically pleasing.

Dragon Tiny Homes has proudly been a NOAH Certified builder for 3 years and counting.



Dragon Tiny Homes is proud to have been NOAH Certified for three years in a row! This certification means our homes meet the highest standards for safety, quality, and compliance with national building codes. Every tiny home undergoes thorough inspections, covering everything from structural integrity and electrical systems to plumbing and overall safety. NOAH's strict certification process ensures that each home is built to last and meets the most up-to-date regulations for tiny home construction.



very
affordable

-Tonika Little



Compact and
customizable.



Built
to Last

